

POWHATAN SPORTS CENTER

GROUND BREAKING – THURSDAY, AUG. 2, 2007



FACT SHEET

ARCHITECTS: CLARK NEXSEN AND ELLERBE BECKET
ARCHITECTURE AND ENGINEERING

CONTRACTOR: SB BALLARD CONSTRUCTION COMPANY, WHO SERVED AS CONTRACTORS FOR THE
TED CONSTANT CONVOCATION CENTER

CONSTRUCTION COST: APPROX. \$17 MILLION

BUILDING SQUARE FOOTAGE: 58,000 (GSF)+FIELD HOCKEY/LACROSSE STADIUM, TWO PRACTICE FIELDS FOR FOOTBALL

EXPECTED COMPLETION DATE: SUMMER 2008

AMENITIES:

FIELD HOCKEY AND LACROSSE STADIUM WILL INCLUDE;

- 1,500 PERMANENT SEATS, WITH ROOM FOR AN ADDITIONAL 1,500 TEMPORARY/EXPANSION SEATS,
- “ASTRO TURF 12”, THE MOST PREFERRED PLAYING SURFACE BY COLLEGIATE AND PROFESSIONAL PLAYERS AND COACHES,
- A “WATER CANNON” WATERING SYSTEM,
- THE LATEST IN TECHNOLOGY FOR SCOREBOARDS, THE PRESS BOX AND FIELD LIGHTING,
- CONCESSIONS AND RESTROOMS,
- EASY ACCESS AND PARKING FOR FIELD HOCKEY AND LACROSSE GAMES AND ATHLETIC CAMPS.

SPORTS CENTER- A STATE-OF-THE-ART FACILITY THAT WILL INCLUDE;

- OFFICES, LOCKER ROOMS, ATHLETIC TRAINING AND STRENGTH TRAINING AREAS,
- TWO-STORY TERRAZZO ENTRANCE LOBBY, THAT WILL INCLUDE DISPLAY AREAS,
- OUTDOOR SECOND LEVEL BALCONY, SUITABLE FOR ENTERTAINING, OVERLOOKING THE FIELD HOCKEY/LACROSSE STADIUM,
- OVER 6,000 SQUARE FEET FOR STRENGTH TRAINING, THAT WILL INCLUDE THE LATEST IN FITNESS AND WEIGHT EQUIPMENT,
- OVER 3,000 SQUARE FOOT ATHLETIC TRAINING FACILITY,
- VIDEO EDITING/PROJECTION SUITES TO ASSIST COACHES WITH PLAYER DEVELOPMENT AND GAME STRATEGY.

FOOTBALL PRACTICE FIELDS-TWO LIGHTED PRACTICE FIELDS, INCLUDING;

- ONE 100-YARD PRACTICE FIELD, AND
- ONE 60-YARD PRACTICE FIELD WITH A SKILLS AND DRILLS AREA.



OTHER ATHLETIC FACILITIES CONSTRUCTION PROJECTS

COMPLETED, UNDER CONSTRUCTION OR NEARING COMPLETION

COMPLETED

SPRING 2007 – ODU SOCCER COMPLEX, WHICH HOUSES THE MEN'S AND WOMEN'S SOCCER TEAMS, AND INCLUDES; OFFICES, LOCKER ROOMS, TEAM ROOMS, A TWO-STORY ENTRANCE LOBBY, AND OUTDOOR PATIO, OVERLOOKING SOCCER PLAYING FIELD.
ARCHITECTS – MOSELEY ARCHITECTS AND HASTINGS & CHEVETTA
CONTRACTOR – SEVAC CORPORATION

JULY 2007 – ODU SOCCER PRACTICE FIELD
LOCATED BEHIND THE SOCCER COMPLEX

JULY 2007 – ODU ATHLETIC ADMIN. BUILDING RENOVATION
INCLUDES EXPANDED STRENGTH AND CONDITIONING ROOM, EXPANDED ATHLETIC TRAINING FACILITIES, THE NEW JACOBSON ACADEMIC CENTER, AND TWO-STORY ENTRANCE LOBBY WITH TICKET COUNTER.
ARCHITECTS – MOSELEY ARCHITECTS AND HASTINGS & CHEVETTA
CONTRACTOR – SEVAC CORPORATION



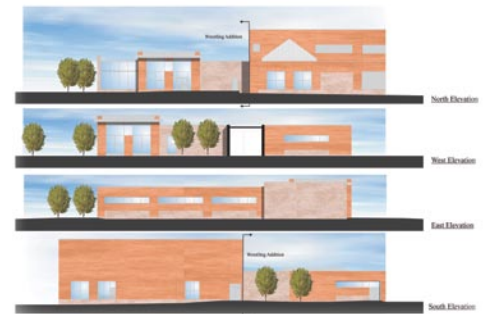
NEAR COMPLETION

FOLKES-STEVENS INDOOR TENNIS COMPLEX AND OUTDOOR COURTS
THIS 74,000 SQUARE FOOT FACILITY INCLUDES EIGHT INDOOR COURTS, OFFICES, LOCKER ROOMS FOR MEN'S AND WOMEN'S TENNIS AND MEMBERS, SECOND LEVEL ENTERTAINMENT MEZZANINE OVERLOOKING ALL COURTS, CONFERENCE ROOM, TERRAZZO MULTI-LEVEL ENTRANCE LOBBY AND PRO SHOP. THE FACILITY WILL ALSO INCLUDE 12 OUTDOOR COURTS, WHICH WILL PROVIDE ODU THE OPPORTUNITY TO HOST EARLY ROUND NCAA TOURNAMENTS. ALL INDOOR AND OUTDOOR COURT SURFACES CONSIST OF THE SAME PLAYING SURFACE AS THE COURTS AT THE US OPEN.
EXPECTED COMPLETION – SEPTEMBER, 2007
ARCHITECTS – RANCORN WILDMAN ASSOCIATIONS, PLC
CONTRACTOR – PEPPERDINE CORPORATION



UNDER CONSTRUCTION

WRESTLING ROOM ADDITION TO ATHLETIC ADMIN. BUILDING
THIS 8,000 SQUARE FOOT ADDITION WILL INCLUDE OFFICES, LOCKER ROOMS, STORAGE AND A PRACTICE AREA FOR WRESTLING.
EXPECTED COMPLETION – SPRING 2008
ARCHITECTS – MOSELEY ARCHITECTS AND HASTINGS & CHEVETTA
CONTRACTOR – SB BALLARD CONSTRUCTION COMPANY



NEW STUDENT RECREATION CENTER

THE 140,000 GSF CENTER WILL INCLUDE A TRAINING AND FITNESS CENTER, AEROBICS/DANCE STUDIOS, AN EXTENSIVE CARDIOVASCULAR CONDITIONING AREA, ELEVATED RUNNING TRACK, RACQUETBALL COURTS, GYMNASIUMS, A MULTIPURPOSE ACTIVITY (MAC) COURT AND CLASSROOM FACILITIES.
SUBSTANTIAL COMPLETION - WINTER OF 2009/10
ARCHITECTS: MOSELEY ARCHITECTS AND HASTINGS & CHEVETTA
CONTRACTOR: SB BALLARD CONSTRUCTION COMPANY

